

HESRM Minutes
January 25, 2012
2:30 PM

Attending faculty: Mark Loftin, Sarahmona Przybyla, John Garner, Dwight Waddell, Martha Bass, Christopher Black, Jeffrey Hallam, David Waddell, Michael Dupper, Allison Ford-Wade, Linda Chitwood, Scott Owens, Kim Beason and Donald Rockey

1. Cycle B assessment-goals for the next 2 years. Loftin

Dr. Loftin reminded the faculty the assessment is due into the system by February 15.

2. Exercise Science C & P issues: Owens

- a. BSES chemistry requirement
- b. Math 121 as a prerequisite for ES 456

Dr. Owens and committee will be reviewing the above subjects and making recommendations in the near future.

3. Special Olympics events: Dupper

- a. SO Basketball, Friday, February 3, 8AM-1PM, Turner Center
- b. SO Track & Field, Wednesday, April 4, 8AM-2PM, U/M Track

Dr. Dupper announced the 2 Special Olympic events and encouraged instructors to ask for student volunteers. He acknowledged faculty and student volunteers were appreciated and played a part in making the past events successful.

Track and field date was changed to reflect the correct date.

4. Advising Schedule for all summer schools and fall 2012, March 21-April 4, faculty sign-up sheets at a later date. Dupper

Dr. Dupper will be asking faculty to sign up in the near future for the advising days which start on 3/21.

Dates were changed to reflect the correct advising dates.

5. HP 635, C&P issues. Ford Wade

Dr. Ford-Wade, with approval and support of the HP graduate faculty, offered up the following change:

Current Catalog Description:

HP 635 ADVANCES IN HEALTH. Examination of current research as it relates to the physiological and psychological aspects of health promotion. Seminar includes paper presentation and discussion by students and faculty. (3). (Spring semester).

Proposed Catalog Description:

HP 635 Theories in Health Promotion. Selected health behavior theories and their application to the practice of health promotion will be covered. Using a social ecological framework, we examine theories, research, and interventions that aim to promote the health of individuals, communities, and populations. (3). (Spring Semester)

After a brief discussion, JD Waddell made a motion to accept the changes, seconded by Dr. Chitwood. The motion carried with no dissents.

6. Activity report. Loftin

Dr. Loftin reminded the FAR was due 4/15/2012 for the March 2011-March 2012 term. He noted the electronic system was now available for faculty to begin entering information.

7. Ranking of HESRM Taylor Medal candidates. Loftin

Dr. Loftin confirmed Morgan Hilton would be the HESRM nominee to send for the Dean's consideration for the SAS Merit Award. After a brief discussion concerning additional award nominees, Dr. Hallam made a motion to select one graduate student name from the HESRM 3 program awardees to send to SAS for consideration for the Graduate Student Achievement Award. Motion was seconded by Dr. Ford-Wade and carried without dissent.

8. Strategic Plan 2012. Beason

As HESRM facilitator for this project, Dr. Beason asked faculty to read the current working model of the UM strategic plan to get an idea of the format and direction. He asked each program coordinator, with the help of the corresponding faculty, to email their goals and strategy to achieve them. He also asked each program to include their strengths and the plan to improve the weaknesses. Dr. Beason noted the HESRM plan is due to the dean's office by May 1st.

Meeting adjourned 3:40 PM.

Respectfully Submitted:

Dale Bramlett
Sr. Secretary
Health, Exercise Science
And Recreation Management

HESRM Agenda January 25, 2012

1. Cycle B assessment-goals for the next 2 years. Loftin
2. Exercise Science C & P issues: Owens
 - a. BSES chemistry requirement
 - b. Math 121 as a prerequisite for ES 456.
3. Special Olympics events: Dupper
 - a. SO Basketball, Friday, February 3, 8AM-1PM, Turner Center
 - b. SO Track & Field, Wednesday, April 3, 8AM-2PM, U/M Track
4. Advising Schedule for all summer schools and fall 2012, March 19-29, faculty sign-up sheets at a later date. Dupper
5. HP 635, C&P issues. Ford Wade
6. Activity report. Loftin
7. Ranking of HESRM Taylor Medal candidates. Loftin
8. Strategic Plan 2012. Beason

HESRM Minutes

March 7, 2012, 2:30 PM

Attending: M Loftin, DE Waddell, K Beason, S Owens, A Ford-Wade, M Bass, J Garner, C Black, JD Waddell, D Rockey

Prior to the HESRM faculty meeting, the faculty convened to meet the candidate, Dr. Michael Weldy. Afterwards the faculty continued with a discussion about all the interviewed candidates. This discussion ran over into the scheduled faculty meeting time so announcements were made as listed in agenda items #1 and #2. Items #3 through #6 were tabled for the next meeting.

Meeting adjourned at 4 PM.

Submitted 3/19/2012
Dale Bramlett

HESRM Agenda March 7, 2012

1. Announcements: Loftin
 - A. Dr. Hallam will serve as graduate coordinator for the next term
 - B. Reminder to post mid-term grades
 - C. Advising reminder (schedule attached)
 - D. Textbook submission deadline, 3/31, for fall and summer sessions

2. PRM Announcements: Beason
 - A. Deb Helms was awarded the Thomas Crowe Outstanding Alumnus Award by the School of Applied Sciences
 - B. PRM Advisory Board meeting, March 30
 - C. Strategic Plans from Programs are due March 23
 - D. Honoring Kevser Ermin at the 2012 Rebelman Sprint Triathlon

3. HESRM newsletter Loftin

4. PRM report of retreat: Beason
 - Name change
 - Curriculum Changes
 - PRM Strategic Plan

5. For discussion: name change of RMST Professional Development Fund to Kevser Ermin Professional Development Award Beason

6. For discussion: PRM 388-Assessment and Documentation in Therapeutic Recreation (Pre-Requisite PRM 262) Beason
(syllabus attached)

HESRM Minutes

August 23, 2012

Noon

Attending: Loftin, Ford-Wade, Dupper, Owens, Brewer, Beason, Garner, DE Waddell,
Townsend, Hallam, Bass, Black, JD Waddell

1. Welcome back and goals for 2012-2013 academic year. Loftin

The meeting was called to order at 12:05. Dr. Loftin welcomed the faculty and staff back to another academic year. Dr. Loftin noted there would be a cut back on course offerings in the spring and completing the position searches would help alleviate the teaching load in 2013. He encouraged continued emphasis on research and grant writing.

2. Introduction: SAS Dean, Dr. Velmer Burton. Loftin

Dr. Loftin welcomed the SAS Dean, Dr. Velmer Burton to the department and turned the meeting over to him. Dr. Burton noted he would be focused on fund raising and resource development. He encouraged the faculty to search and develop 'user fee centers' within the department. He also pointed out the two (2) SAS goals during the coming year would be hiring a development officer and the search for an associate dean.

3. ES 402: proposal to make HP 191 a pre-requisite. Brewer

Dr. Brewer made the suggestion to make HP 191 a pre-requisite for ES 402 citing the pre-req course would better prepare the student for the 402 course and perhaps weed out the non-ES majors. After a brief discussion, Dr. Garner made a motion to table the discussion until further information could be gathered about the suggestion, Mr. Waddell seconded the motion. The motion carried with a majority of the vote.

4. Approval of PRM 388 Syllabi and Outline Beason

Dr. Beason presented the syllabi and outline and asked if the faculty wanted to vote during the meeting or wait until a later date. It was general consensus that the faculty needed more time to study the two (2) documents and vote at the next faculty meeting.

See attached.

5. Announcement: September 29- Rebel Rod Car Show Beason

Dr. Beason explained this event will become the annual, fall, PRM graduate student, project much like the Rebelman Sprint Triathlon is the annual spring graduate student project.

See attached.

6. Change of degree program from "Park and Recreation Management" to "Recreation Administration".

Beason

After an open discussion of the impact of such a change on the department, Dr. Dupper made a motion to table the vote until additional information could be collected about the proposal. The motion was seconded by Dr. Owens. Motion was affirmed by a majority vote. Dr. Loftin asked for volunteers to form a sub-committee to explore the possibility of change, the result and process then report the findings at a later date. Drs. Black, Bass and Beason volunteered.

7. Announcement: Special Olympics Roller Skating, Friday, October 19, 8:30-11:00 AM.

Dupper

Dr. Dupper asked the faculty to seek student volunteers for the event from their classes.

8. Introduction: HESRM Graduate Assistants (1 PM)

Loftin

At approximately 1 PM the graduate assistants joined the meeting. Dr. Loftin welcomed the GAs then faculty and students introduced themselves.

9. Fall HESRM faculty meetings: will be held on Friday afternoons (1 or 1:30 PM), dates will be sent out next week.

Loftin

Statement stands for itself.

Dr. Loftin asked for miscellaneous announcements, additional questions or concerns. With no additional comments, Dr. Loftin closed the meeting at 1:35.

Respectfully submitted:

Dale Bramlett
August 29, 2012

COURSE SYLLABUS
Department of Health, Exercise Science and Recreation Management
University of Mississippi
· Future Semester 201?

- I. Course: PRM 388: Assessment and Documentation in Therapeutic Recreation (Pre-Requisite PRM 262)**
Credit: 3 hours
Instructor: TBA
Office: TBA
Email: TBA
Phone: TBA

Required Text:

Burlingame, J., & Blaschko, T.M. (2002). *Assessment tools for recreational therapy and related fields* (3rd ed.). Ravensdale, WA: Idyll Arbor.

II. Catalog Description:

The course provides the student with the skills necessary to assess the patient/client who has physical, cognitive, psychological, social and/or leisure disabilities and to assess the impact of those limitations as they relate to leisure functioning. It will also provide knowledge of medical terminology and methods in documenting initial progress, transition and discharge notes. (3)

III. Course Objectives

Students will:

1. Be able to identify the impact of impairment and/or treatment on the person served (e.g., side effects of medications, medical precautions) (25)
2. Be able to define the criteria for selection and/or development of assessment (e.g., purpose, reliability, validity, practicality, availability) (26)
3. Demonstrate the ability to implement an assessment (27)
4. Be able to identify behavioral observations related to assessment (28)
5. Demonstrate interview techniques for assessment (29)
6. Demonstrate knowledge of functional skills testing for assessment (30)
7. Be able to identify current TR/RT/leisure assessment instruments (31)

8. Be able to identify other inventories and questionnaires (e.g., standardized rating systems, developmental screening tests, MDS, FIM, GAF) (32)
9. Be able to identify other sources of assessment data (e.g., records or charts, staff, support system) (33)
10. Demonstrate the knowledge necessary to interpret assessments and records of person served (34)
11. Demonstrate knowledge of sensory assessments (e.g., vision, hearing, tactile) (35)
12. Demonstrate knowledge needed to conduct a cognitive assessment (e.g., memory, problem solving, attention span, orientation, safety awareness) (36)
13. Demonstrate knowledge needed to conduct a social assessment (e.g., communication/interactive skills, relationships) (37)
14. Demonstrate knowledge needed to conduct a physical assessment (e.g., fitness, motor skills function) (38)
15. Demonstrate knowledge needed to conduct an affective assessment (e.g., attitude toward self, expression) (39)
16. Demonstrate knowledge needed to conduct a leisure assessment (e.g., barriers, interests, values, patterns/skills, knowledge) (40)
17. Define, explain the purpose, and demonstrate the ability of documentation of assessment, progress/functional status, discharge/transition plan of person served (e.g., SOAP, FIM) (41)
18. Be able to identify and use methods for interpretation of progress notes, observations, and assessment results of the person being served (54)

Prepare students to sit for the CTRS exam by addressing the required knowledge areas for Certified Therapeutic Recreation Specialist related to the above listed processes as identified by the National Council for Therapeutic Recreation Certification (NCTRC). (NCTRC, 2011, Part V, Required Knowledge Areas, items 25-41, 54).

IV. Instructional Methodologies

Varied forms of instruction will be utilized, including lecture, audio-visuals, and student presentations/discussion. Possible guest speakers and off-campus activities may occur. The instructor reserves the privilege to alter the schedule as deemed necessary due to class size, off campus activities, or unforeseen circumstances.

V. Student Obligations

1. Attendance: If you will need to miss class and wish to receive an excused absence, you must speak to the instructor at least 24 hours in advance of the class. More than one unexcused absences will result in lowering of grade by one letter. Please arrive on time to class. It is assumed that you are in this program because you want to be; therefore it is expected that you will be at every class possible.
2. Deadlines: All assignments are to be handed in at the beginning of class on the date that they are due. Papers will not be accepted before that time unless prior arrangements are made with the instructor. Late assignments will be penalized 10% per day. After four days, papers will be graded "F" and not be accepted.
3. Exams/Quizzes: With the exception of persons granted special circumstances, you must be present in class the day of the exam. Students not present will receive a zero for the exam or quiz. Retakes will not be offered.
4. Assignments: All assignments must be typed, double-spaced and stapled with **1 inch margins and 12 pt., Times New Roman font**. A cover page with the student's name, and the assignment title is expected. It is advisable that you number each page and include your name on each page to reduce the possibility of confusion. As well, it is advisable that you make an extra copy of the assignment for yourself. **APA format** is to be used on all scholarly work. A copy of the APA manual is available at the library or in the instructor's office.
5. Academic Dishonesty: Each student is expected to do her own work on all course assignments and exams. Any student found cheating or plagiarizing will receive a failing grade for the course. If you use someone's ideas or words, cite that person. It is expected that all work handed in will be original. Do not turn in assignments completed previously for other courses.
6. Cell phones, pagers and other electronic devices: Use of cell phones or other electronic devices during class time is prohibited. Students who violate this policy will be required to complete additional coursework OR incur loss of points, at the instructor's discretion. Use of notebook computers or similar devices is permitted during class for note taking or class presentation purposes only.

7. If you encounter a difficulty in completing the requirements for this course, please see the instructor immediately.

VI. ADA Statement

If a student has a disability that qualifies under the American with Disabilities Act (ADA) and requires accommodations, he/she should contact the Student Disability Services Department (SDS) for information on appropriate policies and procedures. Disabilities covered by ADA may include learning, psychiatric, physical disabilities, or chronic health disorders. Students can contact SDS if they are not certain whether a medical condition/disability qualifies.

Address: Office of Students Disability Services

234 Martindale Center

PO Box 1848

University, MS 38677

Voice Telephone: (662) 915-7128

TTY: (662) 915-7907

Fax: (601) 915-5972

email: sds@olemiss.edu

web: <http://www.olemiss.edu/depts/sds>

VII. ASSIGNMENTS:

Participation Points (20%)

Purpose: The purpose of these assignments is to encourage students to Similarly, completion of these assignments will assist students in gaining mastery over the materials and aid in preparation for the exams.

Class participation/Pop Quizzes: Points will be given to students on the basis of their willingness and ability to participate in class discussions and learning activities. Pop quizzes will be given throughout the course of the semester. Students will be allowed to use **their own personal notes** (but not textbooks) from class lectures or from videos during the

quizzes. Students who are absent will not be allowed to make-up missed quizzes.

Assessment Project (20%)

Purpose: The purpose of the assessment project is to familiarize students with the development of an assessment tool and provide opportunity to practice administering assessments.

To develop skills needed to systematically gather information to make decisions about an individual's program or treatment plan, students will develop an assessment instrument. The assessment can be a battery of TR assessments but must include a leisure skill component (i.e., recreation as an outcome) and a functional skill component (i.e., recreation as a treatment modality). Students will also have opportunity to administer an assessment to their peers in the classroom.

Assessment Practice (20%)

Purpose: The purpose of this assignment is to introduce students to the process of administering assessments to an actual patient/client.

Using the assessment information, students are to administer at least five assessments to five different patients/clients at a facility approved by the instructor. The instructor must approve this facility at least two weeks before the actual assessments are given. The instructor will provide more information about this assignment at a later date.

Documentation and Evaluation Project (15%)

Purpose: To familiarize students with the documentation and evaluation process.

Students will be given information about a client, their goals and their performance in various therapeutic recreation interventions. Each student will write a progress note for each case using one of the formats taught in class.

Final Presentation (10%)

Purpose: The purpose of this assignment is to (a) share information obtained and ideas generated from the assessment project, assessment practice, and documentation and evaluation project with other class

members, and (b) to practice and improve public speaking and presentation skills.

Students will individually present the cumulative effects of the work throughout the semester. Each student will have 15 minutes to (a) present their assessment instrument, (b) discuss the effectiveness of their assessment instrument, (d) Share the difficulties and challenges presented with while administering assessments (detailed information about patients/clients must be kept confidential) and (e) discuss how and when evaluation would occur for their client that was assessed.

Exams (two @ 10% each)

Purpose: The purpose of the two exams is to provide students opportunities to demonstrate understanding of essential course concepts in a test situation. Students will be given two, 30 question multiple-choice exams. The second exam will not be cumulative.

VIII. Grading Information

Grading:

Assignments:	Points:
Quizzes/Participation	20%
Assessment Practice	20%
Assessment Project	15%
Documentation Project	15%
Two exams (10% each)	20%
Final Presentation	10%
Total	100%

A- 90-100%

B- 80-89%

C- 70-79%

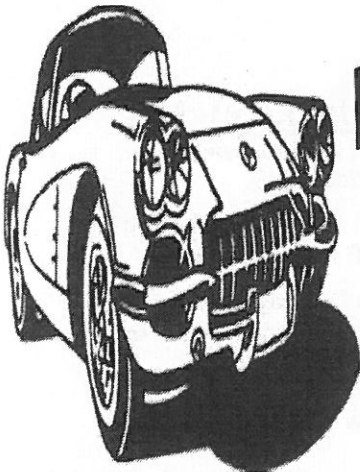
D- 60-69%

F- below 60%

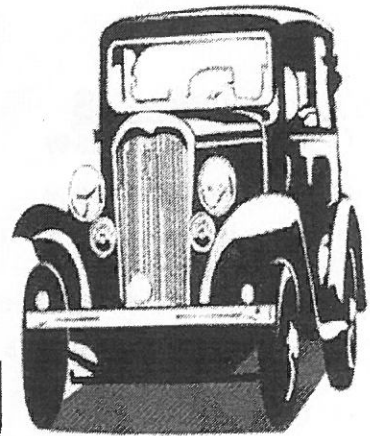
Tentative Course Timeline and Course Assignment details are provided on separate documents.

PRM 388- Assessment and Documentation in Therapeutic Recreation Timeline

Wk	Date	Area Covered	Obj. Covered	Assignments	Du Readings
1	Tues	Syllabus, Introduction, Background Info			
	Thurs	Assessment Basics	2, 7		pg. 9-54
2	Tues	Assessment Theory and Models/History of Assessment in RT			pg. 55-88
	Thurs	Standards of Assessment	17		pg. 89-110
3	Tues	The Assessment Process	3, 5, 7, 10,		pg. 111-156
	Thurs	Test Construction & Other Testing Issues	4		pg. 157-176
4	Tues	Documentation in Medical Charts	1, 9, 17, 18		
	Thurs	Documentation in Medical Charts			pg. 179-304
5	Tues	Standardized Testing Tools, Signs & Scales, Measuring Att	13, 15		pg. 305-518
	Thurs	Measuring Functional Skills	1, 12, 13, 14		pg. 519-616
6	Tues	Measuring Participation Skills	16		
	Thurs	EXAM #1			EXAM
7	Tues	Community Integration Program			pg. 617-640
	Thurs	Measuring Outcomes/Quality Assurance & Quality Indicators			pg. 641-666
8	Tues	Leisure Competence Measure	1		pg. 667-676
	Thurs	Resident Assessment Instrument and MDS	8		pg. 676-705
9	Tues	ASSESSMENT PROJECT DUE			ASSESS. PROJECT
	Thurs	ASSESSMENT PROJECT CT'D			
10	Tues	ASSESSMENT PROJECT CT'D (If not needed, WORK DAY)			
	Thurs	Same as above			
11	Tues	EXAM #2			EXAM
	Thurs	ASSESSMENT PRACTICE PAPERS DUE			ASSESS. PRACTICE
12	Tues	FINAL PRESENTATIONS			FINAL PRES.
	Thurs	FINAL PRESENTATIONS			
13	Tues	FINAL PRESENTATIONS			
	Thurs	FINAL PRESENTATIONS			
14		HOLIDAY (Thanksgiving or Spring Break)			



Rebel Rod Car Show Benefitting



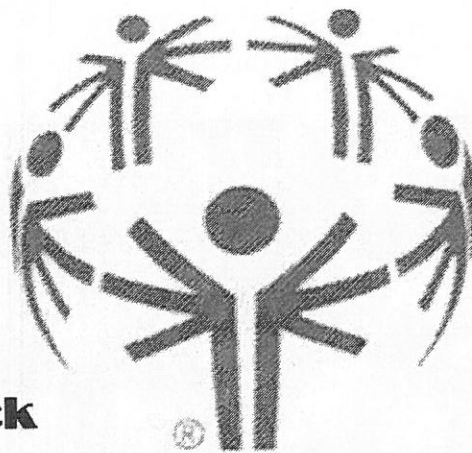
Door Prizes
Silent Auction
50/50 Raffle
City Cruise
Best in Show
People's Choice
Mayor's Pick
Chancellor's Pick

**On-Site Registration
Begins at 8am**

Pre-Registration
\$20/First Car
\$15/Additional Car

Event Day
\$25/First Car
\$20/Additional Car

25 Classes

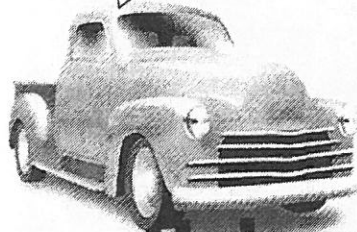


**Special
Olympics**

Like us on
Facebook

September 29, 2012

Old Taylor Road Lot



University of Mississippi Campus

Will Cook 662-934-0751 wrcook1@gmail.com

Dr. Kim Beason 662-915-5555 hpbeason@olemiss.edu

*****Directions on the Back*****

*Ole
Miss*



Rebel Rod Registration



Classes

1. IMPORT CARS
2. IMPORT CARS -MODIFIED
3. MINI TRUCKS -ALL
4. MODIFIED CAR 1949-1963
5. MODIFIED CAR 1964-1987
6. MODIFIED CAR 1988-PRESENT
7. MODIFIED TRUCK 1949-1963
8. MODIFIED TRUCK 19694-1987
9. MODIFIED TRUCK 1988-PRESENT
10. PRODUCTION CAR 1900-1954
11. PRODUCTION CAR 1955-1972
12. PRODUCTION CAR 1973-1986
13. PRODUCTION CAR 1987-PRESENT
14. PRODUCTION TRUCK 1900-1954
15. PRODUCTION TRUCK 1955-1972
16. PRODUCTION TRUCK 1973-1987
17. PRODUCTION TRUCK 1988-PRESENT
18. RAT RODS
19. SPECIAL INTEREST
20. STREET ROD-COUPE
21. STREET ROD-OPEN
22. STREET ROD-SEDAN
23. STREET ROD-TRUCK
24. UNDER CONSTRUCTION
25. MOTORCYCLES

Owner _____ Phone# _____

Mailing Address _____

City _____ State _____ Zip Code _____

Email _____

Mail Entry Form and Payment to:

Rebel Rod Car Show

c/o Dr. Kim Beason

214 Turner Center

University, MS 38677



**Special
Olympics**

*Ob
Miss*

Makes Checks Payable to:

U of M/PRM

****LIST CARS ON REVERSE SIDE****

HESRM Agenda
August 23, 2012
Noon

1. Welcome back and goals for 2012-2013 academic year. Loftin
2. Introduction: SAS Dean, Dr. Velmer Burton Loftin
3. ES 402: proposal to make HP 191 a pre-requisite Brewer
4. Approval of PRM 388 Syllabi and Outline Beason
5. Announcement: September 29- Rebel Rod Car Show Beason
6. Change of degree program from "Park and Recreation Management" to "Recreation Administration" Beason
7. Announcement: Special Olympics Roller Skating, Friday, October 19, 8:30-11:00 AM Dupper
8. Introduction: HESRM Graduate Assistants (1 PM) Loftin
9. Fall HESRM faculty meetings: will be held on Friday afternoons (1 or 1:30 PM), dates will be sent out next week. Loftin

HESRM Minutes
October 12, 2012
2 PM

Attending: Loftin, Beason, JD Waddell, DE Waddell, Ford-Wade, Owens, Brewer, Garner,
Bass, Loftin, Black, Hallam

1. Items from the Chairs meeting. Loftin

Dr. Loftin relayed items from the last Chair's meeting as they concerned HESRM:

- Monies provided to the department for graduate assistant's stipend increases and additional grad assistants was for 1 academic year
- SAS is continuing to lobby for more HESRM space, possibly in another building
- also regarding space, PRM could possibly be moved from the Turner Center

2. Advising and registration for spring 2013 semester. Loftin

Dr. Loftin noted the advising schedule had been posted for the dates selected by the faculty.

3. Teaching observations. Loftin

Loftin reminded faculty to complete teaching observations in a timely manner.

4. Course materials management (textbook assignments) due by October 31st. Loftin

Dr. Loftin asked faculty to assist GAs assigned to classes with their submission of the text material through the Course Book Management system.

5. Hard deadlines for graduate admittance, fall and spring. Hallam

Dr. Hallam asked the faculty to consider hard deadlines for future fall and spring admissions. He wanted to give the faculty time to think this over then he would propose the hard deadline as a motion at a future faculty meeting.

6. Completion of appropriate forms. Hallam

Dr. Hallam pointed out graduate forms were available on the Graduate School website. He also noted the forms had deadlines but before they could be sent forward to GS, he as HESRM Graduate Coordinator, needed 5 business days to review them.

7. Name change for HESRM. Black

Dr. Black spoke for committee members Beason and Bass explaining that after their review they did not feel they could make a recommendation to the faculty to change the name. They could not determine the advantage for making the change. Dr. Black made a motion to table the topic, it was seconded by Dr. Hallam and the vote carried.

8. Changes to ES undergrad core and curriculum. Black

Dr. Black suggested to the faculty to place a GPA requirement on ES majors before they proceed to the junior and senior level of ES courses. It was mentioned that before sharing this vision with Dean Burton, additional information would be needed to show the present faculty to student ratio and how admission to the ES program would be affected if a GPA was instituted. Dr. Black, Owens and DE Waddell volunteered to study this proposal further and report back to the faculty at a later date.

9. Approval of PRM 388 course. Beason

In Dr. Townsend's absence, Dr. Beason submitted her proposal for the revision of PRM 338. In the aftermath of discussion it was decided to give the faculty more time to study the final version and vote via email. This motion was made by Dr. DE Waddell, seconded by Dr. Owens and carried by a majority vote.

10. Approval of Minor in PRM revision. Beason

For the PRM minor, Dr. Beason proposed to remove PRM 262 and 332 from required courses to elective courses. After a brief discussion, it was decided this vote would be taken via email at a later date.

11. 2013 Rebel Man Sprint Triathlon (Sunday April 7th). Beason

Announcement made by Dr. Beason regarding the date.

12. Department Name- Recreation Administration. Beason

After a discussion to change the HESRM name, no motions were made and the item was tabled.

Respectfully submitted:

Dale Bramlett, Sr. Secretary
11/9/2012

HESRM Minutes, October 12, 2012
Addendum

9. Approval of PRM 388 course. Beason

In Dr. Townsend's absence, Dr. Beason submitted her proposal for the revision of PRM 338. In the aftermath of discussion it was decided to give the faculty more time to study the final version and vote via email. This motion was made by Dr. DE Waddell, seconded by Dr. Owens and carried by a majority vote.

Dr. Mark Loftin polled the faculty via email which was completed on 11/16/12. The proposed PRM 388 course was accepted by a majority vote.

10. Approval of Minor in PRM revision. Beason

For the PRM minor, Dr. Beason proposed to remove PRM 262 and 332 from required courses to elective courses. After a brief discussion, it was decided this vote would be taken via email at a later date.

Dr. Mark Loftin polled the faculty via email which was completed on 11/16/12. The proposed Minor in PRM revision was accepted by a majority vote.

Submitted,

Dale Bramlett
Sr. Secretary
February 6, 2013

PROPOSAL TO OFFER THE MINOR IN RECREATION ADMINISTRATION ONLINE & ON CAMPUS AT REGIONAL UNIVERSITY OF MISSISSIPPI CAMPUSES

With the new Bachelor of General Studies degree available at the regional campuses, we would like to formally offer the minor in Recreation Administration (RA) beginning in fall 2014. Realizing that the minor is already offered at the University of Mississippi Oxford Campus we would like to propose the following to effectively offer the minor at all students choosing to complete the minor on-line and/or on the regional campuses.

We believe the minor will be marketable at each of the regional campuses, but more so at Tupelo, Southaven, and Grenada (a campus that has very few degrees available). The regional campuses are near state parks and other public, private, and not-for-profit agencies that may employ individuals with a General Studies degree that included a minor in Recreation Administration. This program may open doors in the job market that our regional graduates do not presently have available to them. We believe we would have at least ten new students at each campus to offset the cost of the initial Clinical Instructor position housed on the University of Mississippi campus in Oxford.

In fall of 2014, Outreach will support the hiring of a 9 month Instructor-rank faculty member to help deliver the courses required for the minor. Through a blend of compressed video and online instruction, the minor can be offered at the regional campuses. **Outreach would pay for the faculty member salary of \$45,000 and all fringe benefits and provide a new computer. Outreach could also negotiate teaching additional courses during the intersessions and summer sessions.**

In subsequent years additional faculty persons, could be hired to help in delivery of the courses required for the minor if the faculty-to-student ratio reaches or exceeds 20:1. Courses would be a blend of compressed video, online, and live instruction. Additional faculty would be expected to teach live courses at the regional campuses. Yearly, we could evaluate to see where we are and what positions would be necessary to service the number of students in the minor. In order to facilitate quality education at the regional campuses dedicated office spaces may be needed for visiting faculty.

If after 2016 a need is established for offering the major in Recreation Administration at the satellite campuses and qualified and adequate faculty are provided the major in Recreation Administration may be offered.

In order to prepare to offer the Recreation Administration Minor we need to begin a search early spring 2014 to attract the best candidates for the position. Timely approval would also provide lead time to recruit on our regional campuses to promote the Recreation Administration minor. Thus we are asking for a quick decision from the administrative individuals involved.

Below is a breakout of the courses, delivery options, and semester offered

Course Designation and Number	The Delivery Option Plan	Semester Offered
PRM 194: Foundations of Leisure Management	Traditional on-campus, Compressed Video, Independent Study, On-line	*Fall- Junior year
PRM 200: Park and Recreation Program Leadership	Traditional on-campus, Compressed Video, Independent Study, On-line	*Spring- Junior Year
•PRM 262: Introduction to Therapeutic Recreation	Traditional on-campus, Compressed Video, Independent Study, On-line	**Fall- Senior Year
PRM 301- Assessment, Planning and Evaluation of Park and Recreation (minimum of C grade in either PRM 194 or 200)	Traditional on campus Or Compressed Video	Spring Semester
•PRM 332: Outdoor Recreation (minimum of C grade in either 194 or 200)	Traditional on-campus, Compressed Video, Independent Study, On-line	**Spring- Senior Year
•PRM 371: Camp Leadership	Traditional on-campus, Compressed Video, Independent Study, On-line	Spring- Junior Year
•PRM 375: Recreational Sports Programming (minimum of C grade in either 194 or 200)	Traditional on-campus, Compressed Video, On-line	Fall- Senior Year
•PRM 380: Current Issues in Travel & Tourism Mgmt.	On-line Only	Fall- Junior Year
PRM 388 Assessment and Planning in Therapeutic Recreation (Minimum of C grade in PRM 262)	Traditional on-campus, and Compressed Video	Fall Semester

*Required

** Currently either 262 or 332 are required. In 2013 neither will be a requirement.

Outreach funded Instructor taught courses (12 hour Load: 9 hours instruction, 3 hours advising)	Courses To Be Taught either On-line and/or Compressed Video
Fall	PRM 194, 262, 371 or 380
Spring	PRM 200, 332, 375

HESRM Agenda
October 12, 2012
2 PM

1. Items from the Chairs meeting. Loftin
2. Advising and registration for spring 2013 semester. Loftin
3. Teaching observations. Loftin
4. Course materials management (textbook assignments) due by October 31st. Loftin
5. Hard deadlines for graduate admittance, fall and spring. Hallam
6. Completion of appropriate forms. Hallam
7. Name change for HESRM. Black
8. Changes to ES undergrad core and curriculum. Black
9. Approval of PRM 388 course. Beason
10. Approval of Minor in PRM revision. Beason
11. 2013 Rebel Man Sprint Triathlon (Sunday April 7th). Beason
12. Department Name- Recreation Administration. Beason

HESRM Agenda

December 5, 2012

2 PM

Attending: Christi Brewer, David Waddell, John Garner, Martha Bass, Jasmine Townsend, Chris Black, Kim Beason, Dwight Waddell, Jeff Hallam, Michael Dupper, Mark Loftin, Allison Ford-Wade, & Scott Owens

Welcome Dr. Loftin

1. Grade posting due Loftin

Grades due Monday, Dec 10 by 6:00pm.

2. Discussion of temporary GA slots for spring 2013 Loftin/Hallam

Brandon Tynes will be stepping down for spring. Catherine Woodyard received PhD fellowship for spring.

Recommended that Vanessa Cazas & Haley Womack to offer a GA position for the spring 2013.

Renewal would be considered along with all other GA's for the next fall.

3. SS/Intersession class enrollment for ES/HP/PRM Classes Dupper

with #5

4. Special Olympics Basketball 2/15/2013 Dupper

Feb 5, 2013- Special Olympics Basketball

Would like to have student volunteers to help

5. Intersession strategies and numbers management DE Waddell

132 people taking intersession classes

HP 191 intersession was asked to consolidate to 1 class

We will be teaching both classes (Dept. will cover difference)

Mr. Waddell made a motion to create a committee of 3 to investigate policies & practices regarding sessions & draft communication and recommendations to appropriate parties.

Second by Dr. Christi Brewer

Further discussion: Dr. Owens requests Chair send msg to Dean Burton for D. Howie & L. Chitwood about confusion amongst faculty to confirm the policy for intersession. Faculty concerned about pedagogy.

Amendment: to include management & strategies for these courses

Motion passed; 2 abstentions.

Committee: Christi Brewer, Jeff Hallam, David Waddell

6. Discussion of ES core hours DE Waddell

Would like to add new core classes (such as aging & obesity)

Would like to revisit (in spring) removal of 191 & 203 reducing core hours by 6 hours.

7. GRE scores for Master and PhD students Beason

What GRE score do students need with the revised GRE?

Handout

Hallam- do not combine the 2 scores.

Recommend:

Verbal	146 (master's)	153 (Ph.D)
--------	----------------	------------

Quantitative	140 (master's)	144 (Ph.D)
--------------	----------------	------------

8. Instructor position in PRM funded by Outreach Beason

Handout

Proposal to outreach to hire instructor for online/outreach classes

Instructor position

Satellite campuses will be offering PRM courses for minor only – not sure what this means

Provide online courses in compressed video format from main campus

When ratio becomes 20:1, we would like to consider adding an instructor at satellite campuses

9. Selection of students to send to the SEACSM meeting/quiz bowl Black

Need students for quiz bowl at SEACSM

Students need biomechanics & testing & prescription background if possible.

10. Faculty Senate Ford-Wade

Changing Thanksgiving week break to 3 days + fall break

More information will be received before any decisions are made

Moving forgiveness policy from 2 to 4.

11. Other

Loftin- Lapse salary money for common equipment

Need computers in blood lab, ex phys. lab, & biomech. lab for use in classes

Poll Everywhere for in-class quizzes

Motion to adjourn: David Waddell

Second: Scott Owens

Respectfully submitted:

Jessica Nichols

12/6/2012

HESRM Agenda
December 5, 2012
2 PM

1. Grade posting due Loftin
2. Discussion of temporary GA slots for spring 2013 Loftin/Hallam
3. SS/Intersession class enrollment for ES/HP/PRM Classes
Dupper
4. Special Olympics Basketball 2/15/2013 Dupper
5. Inter-session strategies and numbers management DE Waddell
6. Discussion of ES core hours DE Waddell
7. GRE scores for Master and PhD students Beason
8. Instructor position in PRM funded by Outreach Beason
9. Selection of students to send to the SEACSM meeting/quiz bowl
Black